
**2016-2017
Annual Report**

Diller-Odell Public Schools



Striving for Successful 21st Century Learners

PURPOSE OF THIS REPORT

The 2016-2017 Annual Report is submitted to the patrons of Diller-Odell Public Schools in accordance with the accreditation rules set forth by the Nebraska Department of Education. The annual report provides patrons with information regarding our school demographics, student achievement, and financial information. This report highlights some of the challenges and accomplishments in our district.

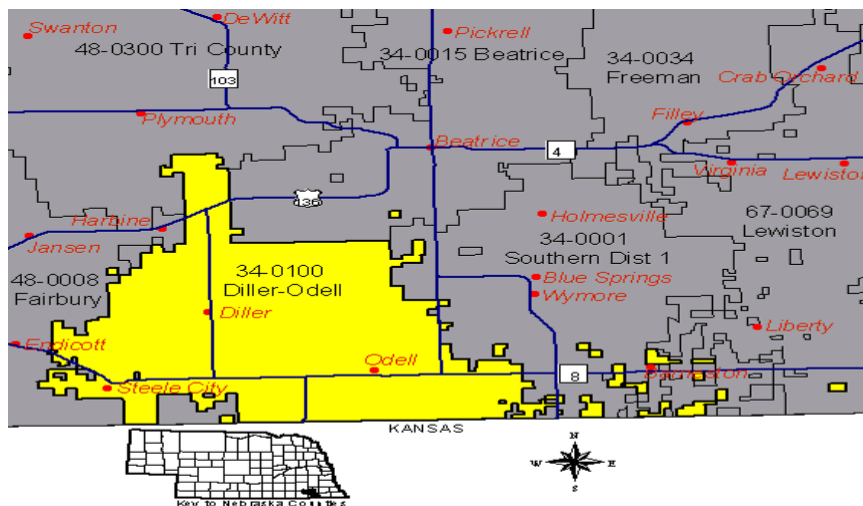
NEBRASKA EDUCATION PROFILE

More information about Diller-Odell Public Schools 2016-2017 academic year can be found on the Nebraska Education Profile at <http://nep.education.ne.gov>.

- 1) Go to the **Data, Policy and Research** option on the drop down menu to the right, then click on **Nebraska Education Profile**.
- 2) **Select Data Year 2016-2017** and click on **Search Districts**.
- 3) Type **Diller-Odell Public Schools** in the **District Name** box in the top right.
- 4) Click on **DILLER-ODELL PUBLIC SCHOOLS**.
- 5) Informational choices are on the top and right tabs of the page.

DESCRIPTION OF THE DISTRICT

Diller-Odell Public Schools is a consolidated district organized on April 2, 2000. The Diller and Odell communities are twelve miles apart and the district covers approximately 170 square miles in southern Gage and Jefferson Counties. Community members are dedicated to a quality education for their children. Twice patrons approved a levy override. Nearly 75% of receipts come from local taxes, and nearly 70% of the budget is appropriated for instructional use.



DILLER-ODELL PUBLIC SCHOOLS

DISTRICT MISSION STATEMENT

Striving for Successful 21st Century Learners

BOARD OF EDUCATION

Chad Lottman
Jill Scheele

Dean Engelman
Paul Kostal

Gary Stohs
Toni Landenberger

SCHOOL IMPROVEMENT GOALS

- All students will improve proficiency in reading comprehension.
- All students will improve their writing skills by implementing writing across the curriculum.

BELIEF STATEMENTS

- Students will show responsibility, self-control, and good citizenship, while recognizing and respecting diversity among people and ideas.
- Students will become lifelong learners, positive contributors to society, and problem solvers in an ever-changing world.
- Students will believe in their abilities, recognize their accomplishments, learn from their experiences, and continue to set new goals.
- Students will effectively exhibit cooperation and competitiveness in group settings.

CERTIFIED STAFF

Faculty Members	Education Level	Years Experience	Position
Mike Meyerle	Ed.S.	27	Superintendent
Christopher Prososki	Ed.D.	9	PK-12 Principal
Rita Becker	M.A.	14	Guidance Counselor
Abigail Kostal	B.A.	2	Sixth Grade Teacher
Amy Coufal	M.A.	17	7-8 English Teacher/Technology
Beth Roelfs	M.A.	21	K-6 Special Education Teacher
Delaney Roberts	B.A.	1	Preschool/Special Education Teacher
Catherine Klecan	B.A.	27	K-12 Art Teacher
Chris Schluter	B.A.	6	Health/P.E. Teacher
Corinna Vrbka	B.A.	6	Social Studies Teacher
Eric McMurray	B.A.	27	7-12 Mathematics Teacher
Helen Swanson	B.A.	18	Fourth Grade Teacher
Jan Liscom	M.A.	23	K-6 Music Teacher/Reading Specialist
Jacki Smith	B.A.	17	7-12 Special Education Teacher
Janel Hynek	B.A.	21	Second Grade Teacher
John Denner	B.A.	23	Title Teacher
Janelle Gegg	M.A.	16	9-12 Spanish Teacher/12 English Teacher
Jeanne Skidmore	B.A.	28	First Grade Teacher
John Mohr	B.A.	20	7-12 Social Studies Teacher
Justin Larsen	B.A.	11	Fifth Grade Teacher
Kent Ropers	M.A.	31	7-12 Science Teacher/Athletic Director
Lisa Bohling	B.A.	32	7-12 Business Teacher
Marilyn Hein	M.A.	17	7-12 Mathematics Teacher
Pamela O'Neil	B.A.	4	9-12 English Teacher
Patty Heble	B.A.	20	Kindergarten Teacher
Katie Husman	B.A.	1	Agriculture Education Teacher
Stacy Hennerberg	B.A.	25	Third Grade Teacher
Susan Meyer	B.A.	39	Media Specialist
Terry Arnold	M.A.	23	7-12 Science Teacher
Tiffany Schoenrock	B.A.	12	5-12 Band/Vocal Teacher

Abbreviation	Degree
B.A.	Bachelor's Degree
M.A.	Master's Degree
Ed.S.	Education Specialist
Ed.D.	Doctor of Education

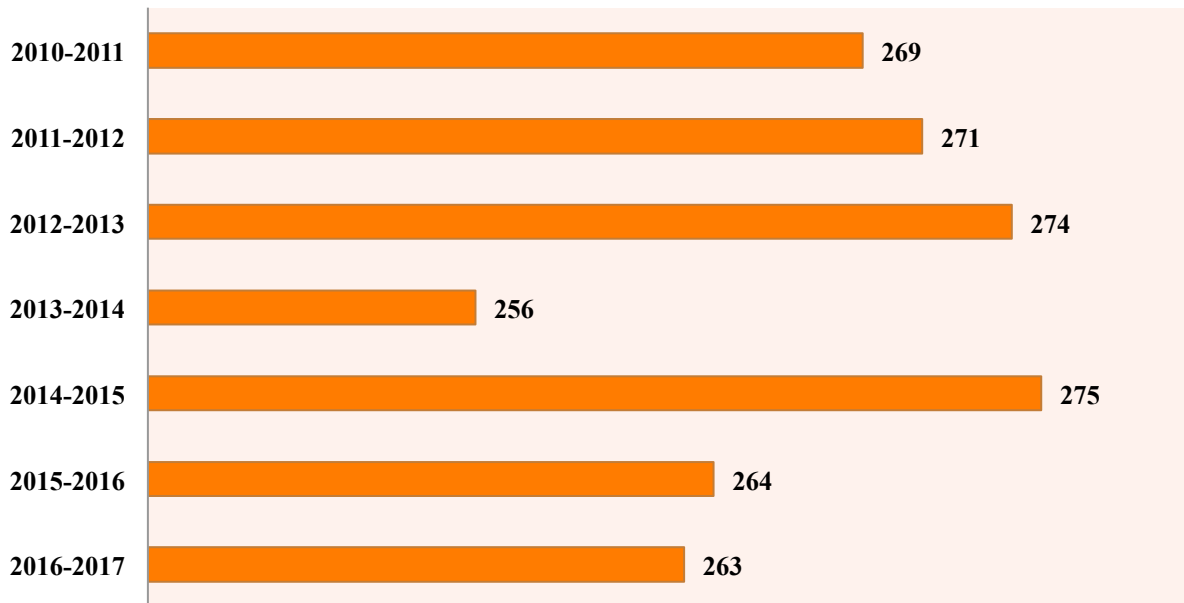
CLASSIFIED STAFF

Faculty Members	Position
Andrea Humphreys	Clerical Staff
Bill Behrends	Bus Driver
Carol Clark	Bus Driver
Carolyn Vitosh	Cook
Cindy Stohs	Paraprofessional
Dallas Stohs	Custodian
Dawn Ebeling	Clerical Staff
Dori Ropers	Paraprofessional
George Rempel	Bus Driver
Hannah Oberembt	Paraprofessional
Jennifer Wendland	Cook
Joyce Kostal	Custodian
Judith Krause	Paraprofessional
Keith Craig	Custodian
Kristie Sutton	Paraprofessional
Marcia Duerksen	Paraprofessional
Marlene Wolken	Bus Driver
Marlys Koch	School Nurse
Phyllis Leseberg	Cook
Renee Hroch	Clerical Staff
Rick Wallinger	Bus Driver
Ronda Duis	Cook
Susan Lawton	Paraprofessional
Mark Liscom	Bus Driver

ENROLLMENT FIGURES

Compiled on the last Friday in September (2016)			
Grade	Female	Male	Total
PK	6	8	14
K	10	11	21
1	11	7	18
2	7	11	18
3	10	9	19
4	8	10	18
5	9	12	21
6	6	9	15
Elementary School	61	69	130
7	10	10	20
8	6	7	13
9	15	5	20
10	13	14	27
11	7	14	21
12	15	17	32
Jr./Sr. High School	66	67	133
District	127	136	263

7 YEAR ENROLLMENT FIGURES PK-12

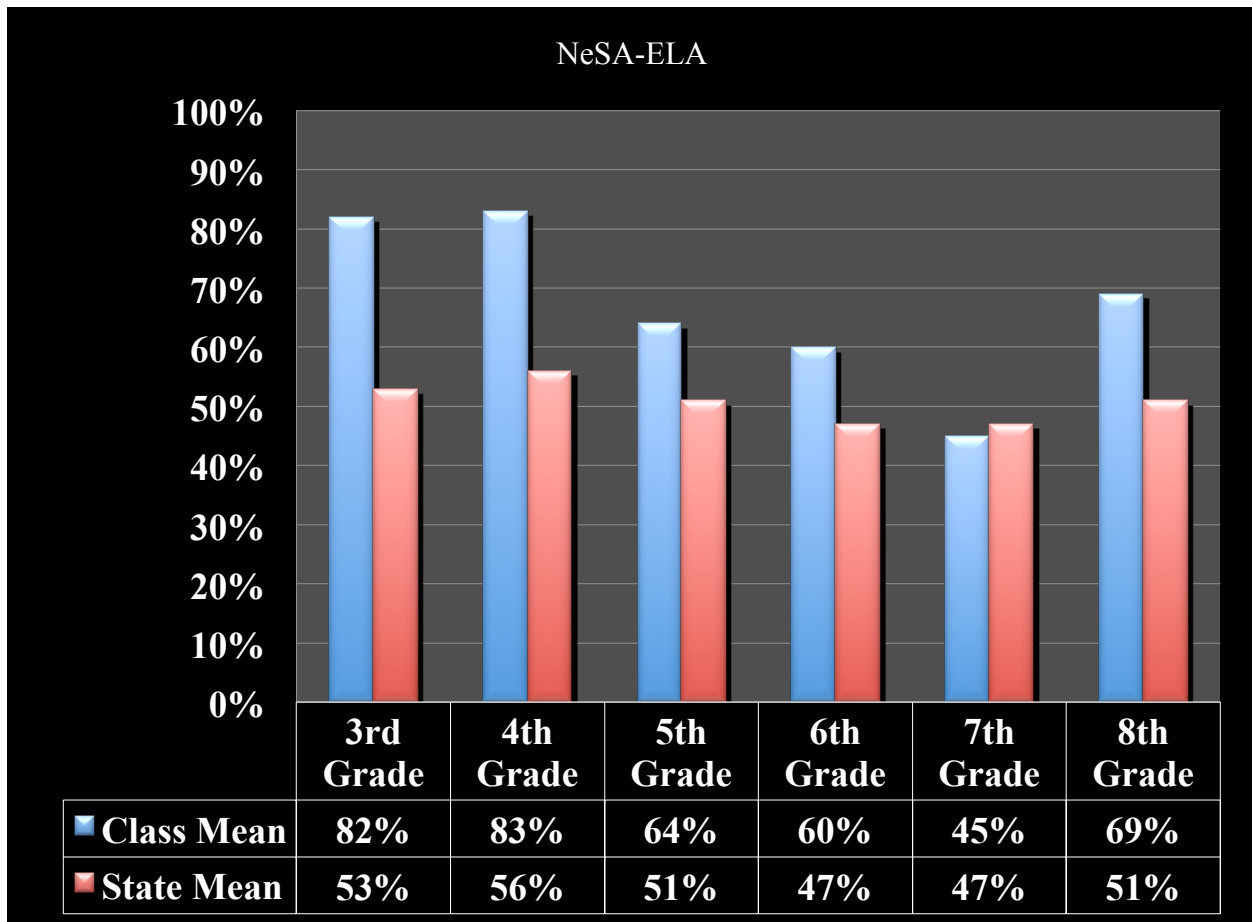


NEBRASKA STATE ACCOUNTABILITY (NeSA)

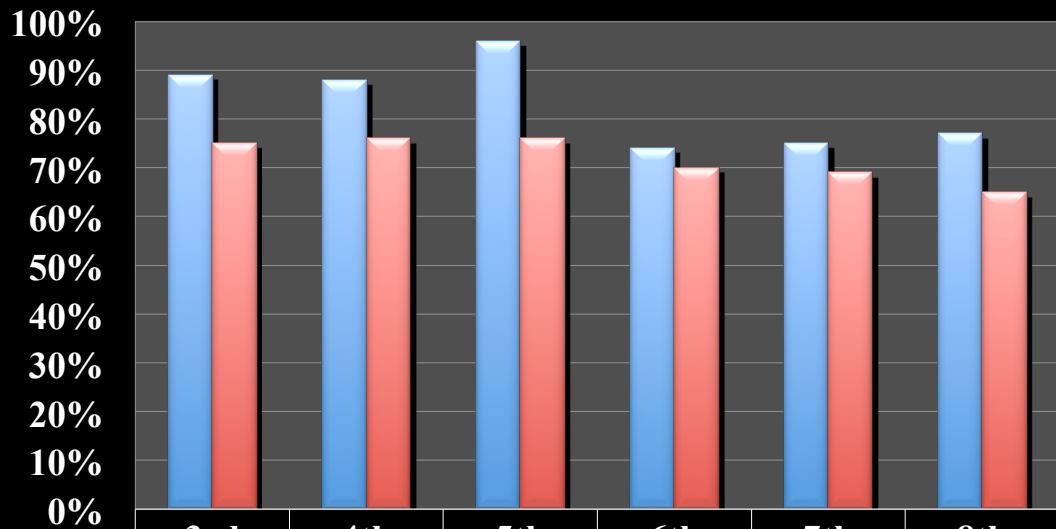
The Nebraska State Accountability (NeSA) assessments were developed specifically for Nebraska to provide teachers, students, and parents with an assessment of student progress in mastering basic skills based on Nebraska’s academic standards in English Language Arts, mathematics, science, and writing. The NeSA test is a criterion-referenced assessment that is given once a year in the spring to measure student performance towards the standards. The following table is a breakdown of the NeSA assessments administered at each grade level.

NeSA Assessment	Subject	Grades Administered
NeSA–ELA	English Language Arts	3-8 (Spring)
NeSA–M	Mathematics	3-8 (Spring)
NeSA–S	Science	5, 8 (Spring)

NEBRASKA STATE ACCOUNTABILITY (NeSA) Percent Proficient By Grade/Subject Area (Class Mean) 2015-2016 Academic Year

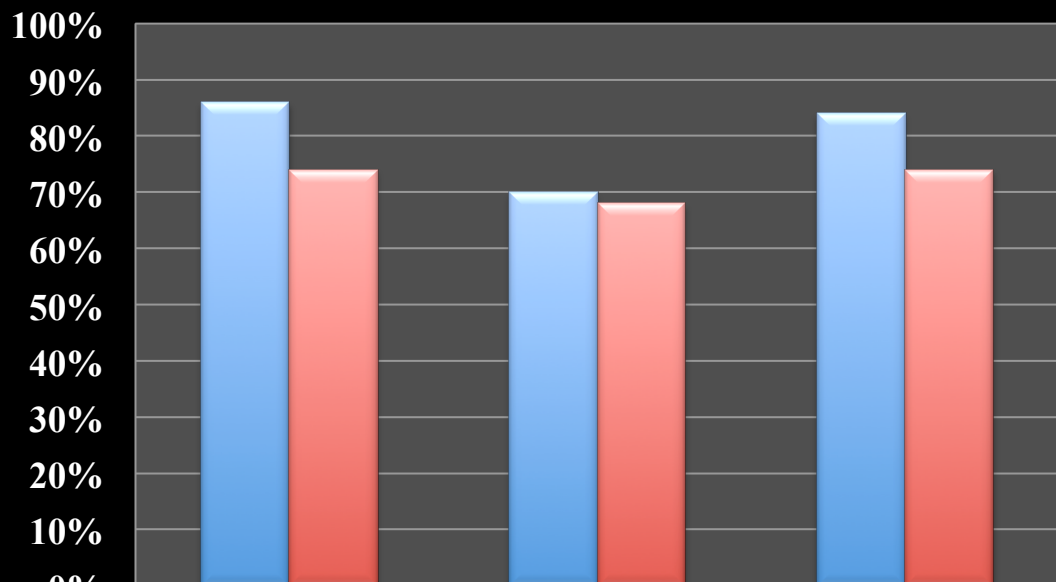


NeSA-Mathematics



	3rd Grade	4th Grade	5th Grade	6th Grade	7th Grade	8th Grade
Class Mean	89%	88%	96%	74%	75%	77%
State Mean	75%	76%	76%	70%	69%	65%

NeSA-Science



	5th Grade	8th Grade	11th Grade
Class Mean	86%	70%	84%
State Mean	74%	68%	74%

NEBRASKA STATE ACCOUNTABILITY (NeSA)

Combined Results for All Grades Tested Percent Proficient – Longitudinal Data

	Reading	Mathematics	Science	Writing
2010-2011	74%	75%		
2011-2012	81%	82%	83%	
2012-2013	84%	73%	83%	68%
2013-2014	84%	82%	84%	--^^
2014-2015	90%	85%	79%	73%
2015-2016	88%	81%	81%	74%
	ELA*	Mathematics	Science	
2016-2017	67%	83%	76%	

^^ In 2014 students in grades 8 and 11 experienced technology issues with the online test. Valid results are not available for all districts or for the state for NeSA-Writing at grades 8 and 11.

*With the adoption of new College and Career Ready Standards, the former NeSA Reading standards and assessment is now referred to as ELA.

AMERICAN COLLEGE TESTING (ACT)

Beginning in 2017, the new accountability measure adopted by the Nebraska Department of Education for all third year cohort students is the ACT. All juniors at Diller-Odell took the ACT in 2017.

Longitudinal ACT Data

		2011	2012	2013	2014*	2015	2016*	2017
English	District	24.4	23.5	23.2	24.9	19.5	26.0	18.8
	State	21.8	21.8	21.1	21.3	21.1	20.9	18.4
Mathematics	District	25.6	23.0	24.2	24.4	21.7	25.4	21.6
	State	21.7	21.7	21.1	21.1	21.0	20.8	19.4
Reading	District	23.6	22.1	20.7	23.1	20.8	25.5	18.6
	State	22.3	22.3	21.8	22.0	21.9	21.8	19.5
Science	District	24.6	22.2	22.8	22.7	22.2	26.0	20.7
	State	22.0	21.9	21.5	21.7	21.6	21.5	19.5
Composite	District	24.8	22.8	22.9	23.7	21.2	25.9	20.0
	State	22.1	22.0	21.5	21.7	21.5	21.4	19.3

* indicates fewer than 10 students were reported in a group.

OPTION ENROLLMENT INFORMATION
2015-2016 Academic Year

Amount of Students that Option In	19
Amount of Students that Option Out	22
Net Option	-3

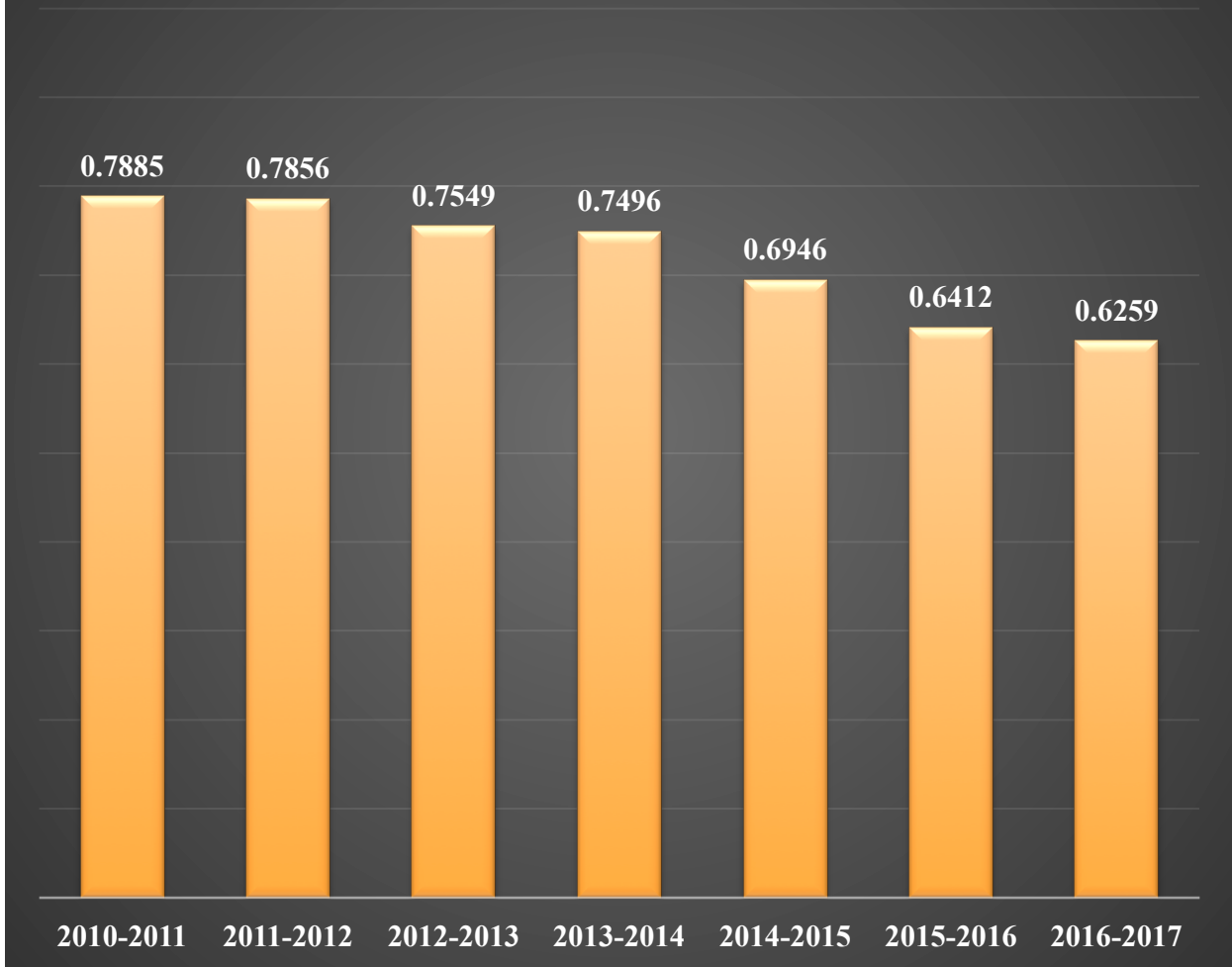
2016-2017 BUDGET INFORMATION

Diller-Odell Public Schools continues to have one of the lowest mill levies in the state of Nebraska, while operating a fiscally responsible budget with next to no state aid. The Diller-Odell Public Schools budget for the 2016-2017 school year was \$4,127,920. The 2016-2017 budget saw a decrease of \$4,219 from the 2015-2016 budget of \$4,132,139. The 2016 valuation of \$659,369,912 increased \$15,011,966 (2.3%) over the 2015 valuation of \$644,357,946.

LEVY COMPARISON INFORMATION

	2010- 2011	2011- 2012	2012- 2013	2013- 2014	2014- 2015	2015- 2016	2016- 2017
General	.7863	.7835	.6875	.6856	.6149	.5707	.5662
Special Building	.0022	.0020	.0674	.0640	.0797	.0705	.0597
Total	.7885	.7856	.7549	.7496	.6946	.6412	.6259

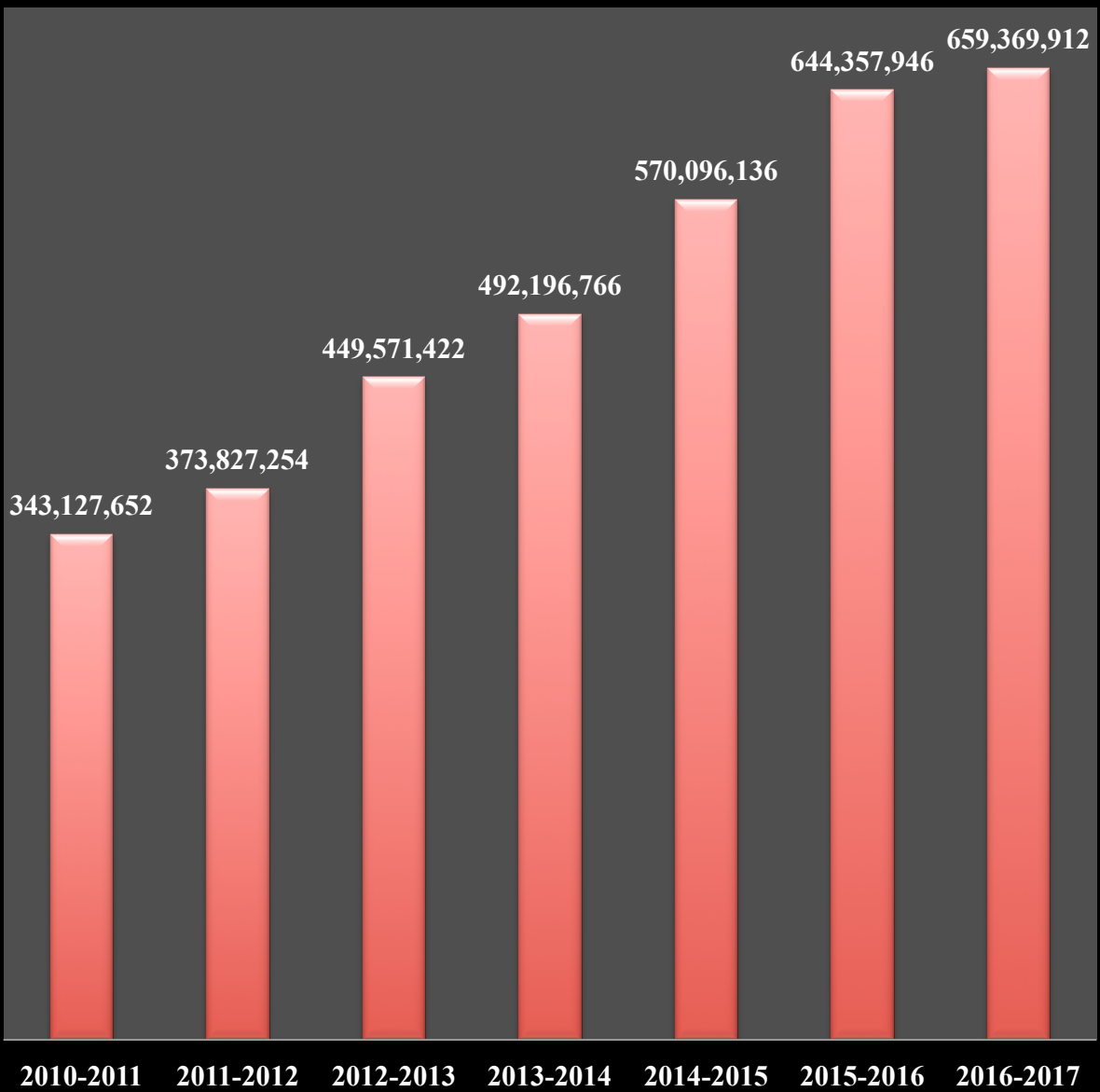
LEVY HISTORY



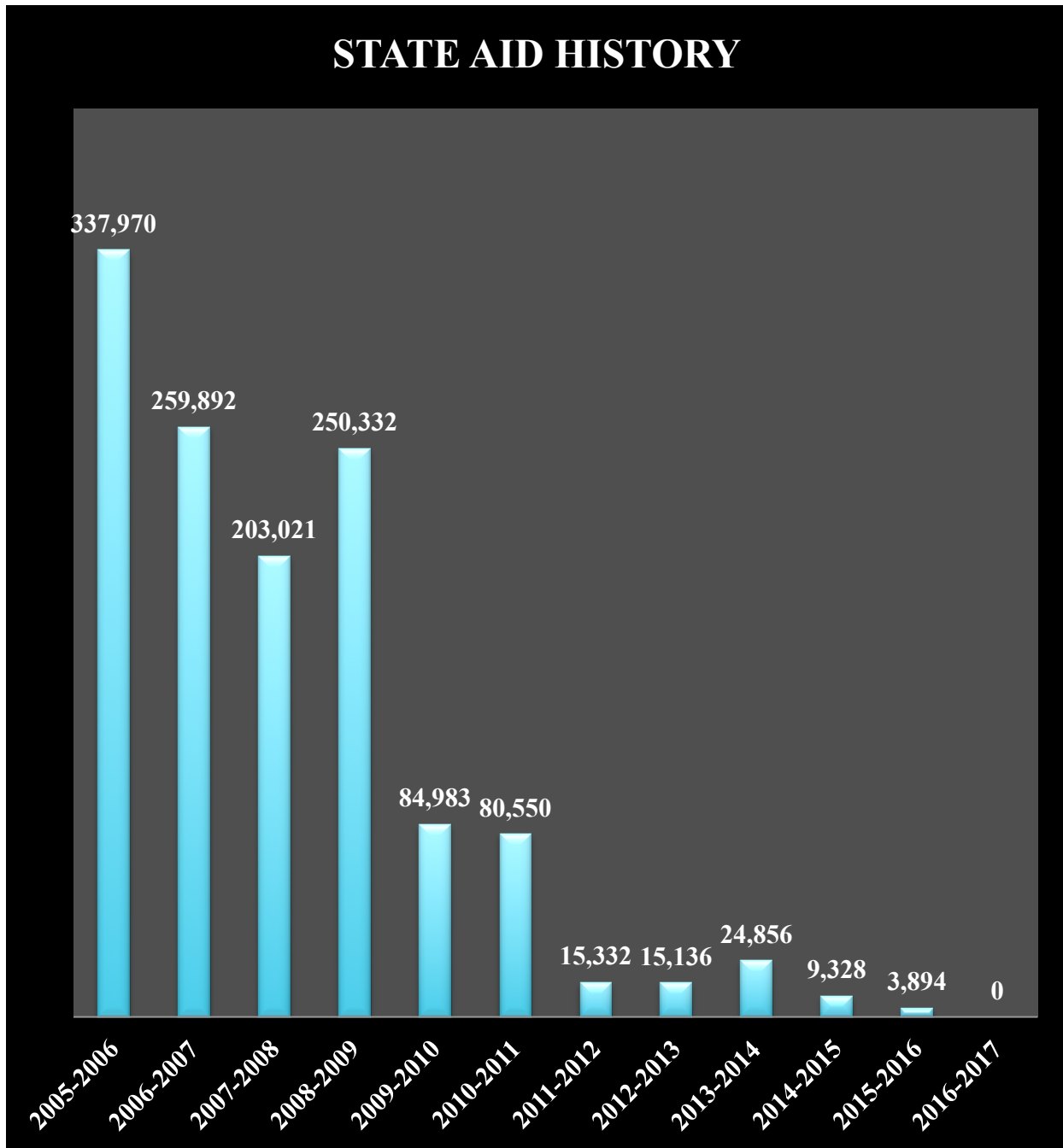
2016 VALUATIONS

County	2016
Gage County	\$366,565,683
Jefferson County	\$292,166,844
Pawnee County	\$637,385
Total	\$659,369,912

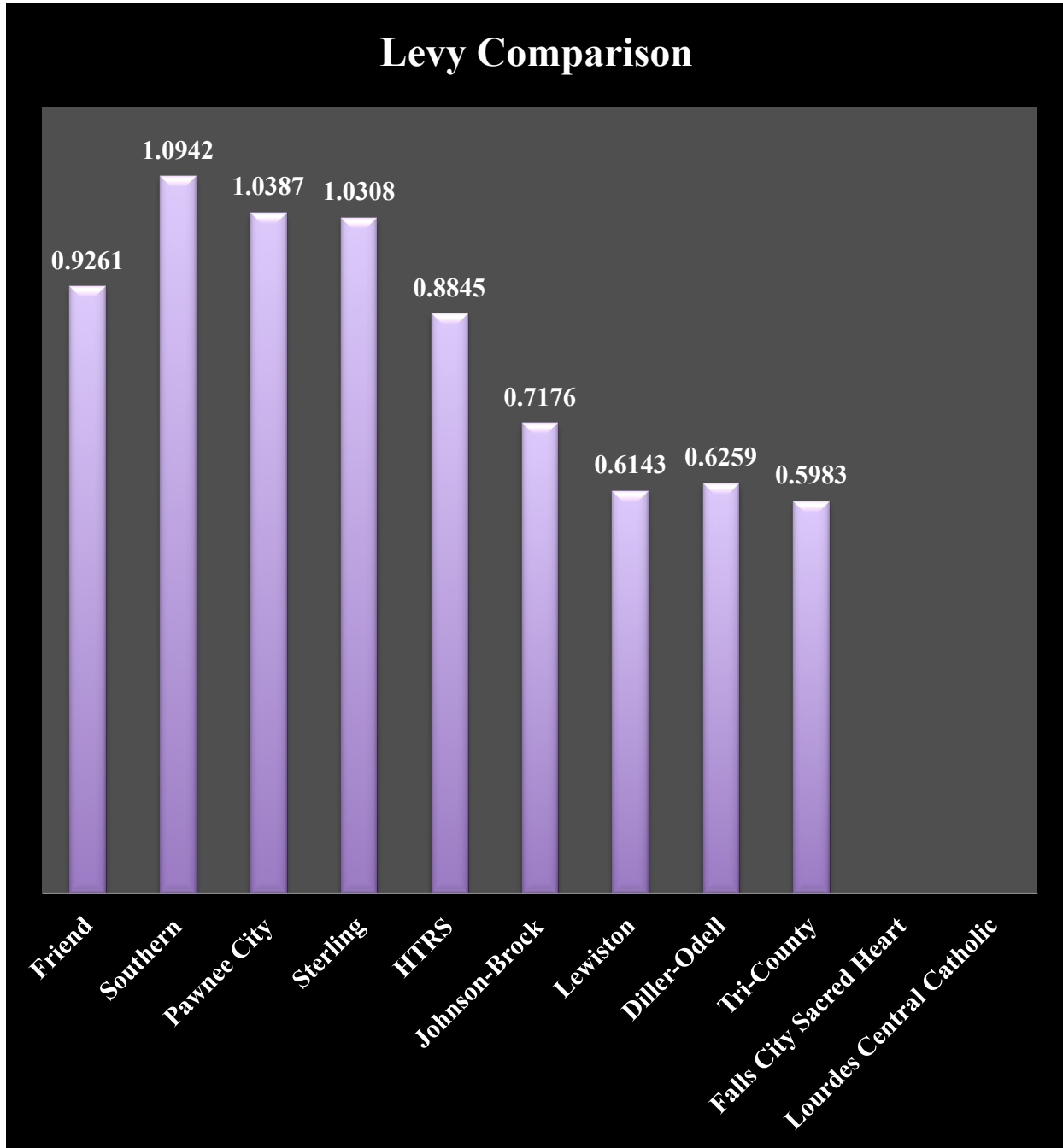
VALUATION HISTORY



DILLER-ODELL PUBLIC SCHOOLS STATE AID HISTORY

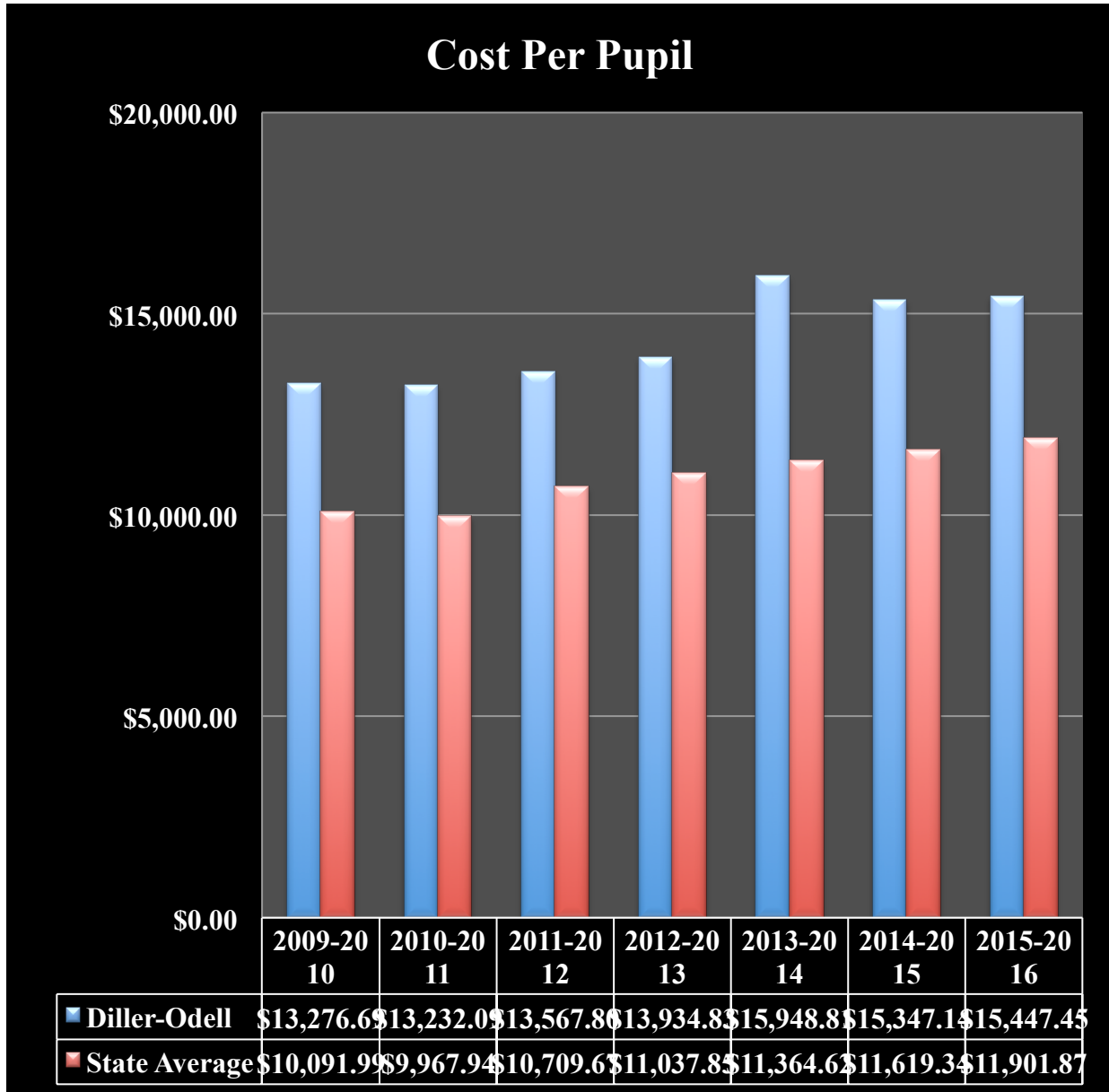


PIONEER CONFERENCE LEVY COMPARISON



***Please Note:** Falls City Sacred Heart and Lourdes Central Catholic are parochial schools (Parochial schools require students/families to pay tuition to receive a formal education).

COST PER PUPIL BY AVERAGE DAILY MEMBERSHIP (ADM)



***Please Note:** The 2016-2017 cost per pupil by average daily membership and the state average is not available at this time.

Please feel free to contact me with any questions that you might have regarding the 2016-2017 Annual Report.

Mike Meyerle
Superintendent